

volunteer **VOICE** 2017

cultivating a strong community now and forever



P.O. Box 164, Middleville, MI 49333
(269) 945-0526 | taef@barrycf.org

a geographic affiliate of the Barry Community Foundation

a letter to the COMMUNITY

Thornapple Area Enrichment Foundation (TAEF) celebrated its 25th anniversary this year, a major achievement for any foundation. TAEF was created in 1992 with a gift from the Trouyot Family. Presently, we have 46 funds with \$1,887,000.00 in total assets. Since 1997, TAEF has honored 27 community members with the Hometown Hero Award.

We continue to have a major impact on the students in Thornapple Kellogg Schools. We gave away \$40,000.00 in scholarships this year to over 20 recipients. Since 2007 we have awarded over \$450,000.00 in scholarship dollars to graduates of Thornapple Kellogg High School. For some, these funds have made a major difference in their post-high school education options. Recently TAEF made a decision to focus on our youngest students. As part of the KickStart to Career Savings Program, The Barry Community Foundation opens savings accounts for each Kindergarten Student in the amount of \$50.00. More importantly we are educating students and their families about saving for future education costs and opening up dialogue about college/ career plans.

The TAEF Board has committed to adding \$5.00 to each of these accounts on the odd grade level years for students that remain in the Thornapple Kellogg School District. Now this may seem like a small amount for each account holder, but we estimate that, once our first group of kindergartners reach 9th grade, TAEF will be adding over\$6,250 annually to these accounts. Lastly, we continue to offer community grants to better the greater Middleville Area. Recently we helped fund the Veterans Memorial as well as a new baseball field located at McFall Elementary for Thornapple Area Parks and Recreation.

Without your continued support, we would not be where we are today. We have accomplished so much in our 25 year history. I cannot wait to see where we are in another 25 years! With your help we can continue to cultivate a strong community, now and forever.

Sincerely,
Kristen Cove, TAEF Board President



board of TRUSTEES

Front Row (from left): Shelley Erb, Annie Halle (BCF/TAEF Liaison), Kristen Cove, Beth Hannapel, Janis Fitzgerald
Back Row (from left): Brady Zellmer (YAC Representative), Kyle McKeown, Mike Bremer, TK Superintendent: Tom Enslen, Matt Palmer
Not pictured: Jeff Wolverton, Lyndsey Carpenter, Mark Sevald, Craig Stolsonburg

WALT EAVEY HOMETOWN HERO



Walt Eavey has spent his over 80 years truly serving his family, his community and his country. Walt graduated from Thornapple Kellogg High School in 1952 and then raised his four children in Middleville as well.



He served his country in the Korean War from 1953-1955 and was honored as the Veteran of the Year in 2016 by the Middleville Veterans committee.

After his military service, 23 year old Walt

renewed his passion for community service as a volunteer fireman, first responder, and later as the service photographer for Thornapple Township Emergency Services. Walt responded to his community's calls for help at all hours of the day and night whenever he was needed. Walt served the Fire Department for 39 years from 1965 to 2004.

In 1996, Thornapple Township voters elected Walt to represent them as their Township

Trustee where he served for two decades. Each fall, Walt ensures every veteran's grave is decorated with a military marker. He continues to lead yearly service projects with United Way and local service groups to clean and repair damaged headstones. Walt also served as a founding member on the Thornapple Area Parks and Recreation Commission during his tenure at the Township.

Walt has truly LIVED a life of service through his involvement, both past and present, within our community. Heroes like Walt aren't made in a split second or even in a day. They are rare and grow through the course of a lifetime. Walt is a humble man continuing to quietly volunteer his time to serve however, wherever and whenever he can.



expanded GRANTING

TAEF continues to broaden its focus to include community granting that supports community based initiatives in Middleville. Although TAEF began with the focus of education, we understand that we need to support the entire community to ensure a healthy school district. Our TK community continues to grow and so does its needs.

Community grants will allow us to support many types of projects over the next few years. We are excited to be embarking on this new area of giving, and we hope you will join us in this important work.



2016-2017 GRANTS

COMMUNITY BASED GRANTING

\$1,000 awarded to the Thornapple Area Parks and Recreation to restore the McFall baseball field. The field is utilized by 33 baseball and softball teams in the Middleville area.

\$500 awarded to the Community Education and Recreation Center to purchase a new score board, timing system, and record board.

\$450 granted to the TK Odyssey of the Mind to help with transportation expenses associated with the Odyssey of the Mind World competition at Michigan State University. The funding for this grant was provided by the Jeffery Lehman Memorial Scholarship Fund and the Fitzgerald Odyssey of the Mind and Arts Fund.

CLASSROOM GRANTING

\$400 granted to Lee Elementary to purchase Keva Blocks, which will challenge students to build and create projects of all sizes.

\$400 awarded to TK High School's Special Education Department to allow students to attend transitional visits to the Kent Career Technical Center. Visits will introduce students to career opportunities beyond the High School.

\$300 granted to McFall Elementary to purchase Spanish books and kits for its Kindergarten Spanish lessons. Teaching the students a second language at a young age will help them achieve a more global learning experience and prepare them for a global economy.

\$300 awarded to Lee Elementary to purchase biography books from the 'Who is...' Series. These books will help students learn how individuals can influence history and how history can influence an individual.

\$700 granted to McFall Elementary to purchase Flexible seating which will give students seating options to help them learn.

\$300 awarded to Lee Elementary to purchase Strawbees. Strawbees are a new construction kit that lacks the branded tie-ins, but challenge kids to build and create projects of all sizes.

\$450 awarded to the Early Childhood Special Education class to allow students to participate in enrichment activities, such as, field trips and a holiday baking experience.

\$1,000 granted to the TK Cognitive Impairment Class for Therapeutic Horseback Riding sessions at the YMCA.

\$400 granted to TK High School to take juniors on two college tours. Students learned about post-secondary academic opportunities and well as experience the college experience.

\$600 awarded to the Great Start Reading Program Preschool to provide field trips to students and their families.

\$2,000 granted to Lee Elementary to purchase a 3D printer and supplies for the Makerspace Lab. The Makerspace Lab is a unique hands-on classroom that allows students to come together to create, explore, discover, communicate, and build.

MAKERSPACE

The Thornapple Area Enrichment Foundation (TAEF) helped Lee Elementary students build S.T.E.A.M with their Makerspace learning lab! The lab allows students the tools to create hands-on, student-driven projects in discovery areas focusing on Science, Technology, Engineering, Arts and Mathematics.



"The end result is students who take thought-risks, engage in experiential learning, persist in problem-solving, embrace collaboration and work through the creative process," said Angie Jefferson, Lee Elementary principal. The Makerspace lab makes it possible for TK's 2nd and 3rd grade students to disassemble

computers, Skype with students in Switzerland, build video games, make videos and do 3-D printing.

Makerspace is a hit with students, teachers and parents, and "very different in a good way," said Nathan Fischer, a second-grade teacher who described the room's buzz as "like a busy Apple store."



Makerspaces are meant to allow students to create and learn and explore without a lot of boundaries or direction, Jefferson said. "Some kids are not successful with the more traditional approach."



The creation of the space is extra special to Jefferson because 100 percent of its cost was paid for through donations. "It has become an amazing place for student to explore, invent, create, and extend the students learning. This space would not have been possible without the generous support of the Thornapple Area Enrichment Foundation (TAEF). TAEF supported KEVA planks, Strawbees, and our 3D printing station. These are all very popular and relevant stations in the MakerSpace. That were a total must,"

2017 SCHOLARSHIP recipients

Congratulations to the 2016 Thornapple Area Enrichment Foundation scholarship recipients. We are committed to providing support for our Thornapple Kellogg High School graduates by helping them achieve their postsecondary aspirations. This year almost \$42,500 was paid in scholarships.



Aaron Czarnecki

TAEF Lynn Helrigel Summers Memorial



David Cove

TAEF Lois Ann Nagel Seppanen Memorial



Gabrielle Encinas

TAEF Francisca C. Vrona Memorial
TAEF Samuel McKeown Memorial



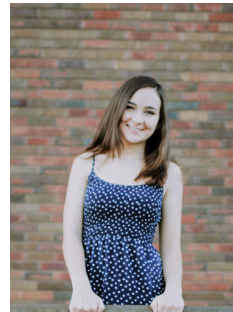
KaLeigh Aldridge

TAEF Dr. Wayne and Marie Finkbeiner



Kiley Hilton

TAEF Class of 1957
TAEF Ray Page Scholar-Athletic Memorial



Kirsten Hey

TAEF John and Maxine Robertson Family



Wyatt Mast

TAEF McCullough Family DK



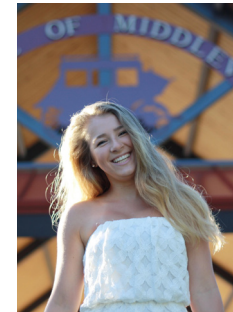
Carrie Finholm

TAEF McCullough Family TK
TAEF Millicent Grace Knox



Levi Thaler

TAEF Alecia Lorraine Holst Memorial



Ellen Sidebotham

TAEF Jon and Kay Simpson
TAEF Matching RKW Working Student
TAEF Samuel McKeown Memorial



Rachael Ranes

TAEF Samuel McKeown Memorial
TAEF Thomas Hamilton Tennis Memorial
TAEF William McGee Memorial



Carleigh Lenard

TAEF Rodney and Rena Schad Memorial
TAEF Samuel McKeown Memorial



Ryan Numerick

TAEF Adam Dipp



Andrea Macomber

TAEF Terri Yoder Memorial



Macie Stevens

TAEF Tad Thatcher Memorial



Matthew Pavlik

TAEF Eugene & Edna Hendrickson



Claire Harris

TAEF Travis Wenger 4-H



Megan Bishop

TAEF Beth Helrigel Wester Memorial



Diane Fryling

TAEF Adele & Arnold Parker
TAEF Gerald L. Page
TAEF John and Maxine Robertson Family



Michelle Rounds

TAEF Mom's



Ashley Bowerman

TAEF Mom's

NOT PICTURED: Tanner Schultz recipient of: TAEF Clay Hills Farm and TAEF TK Tradesman

OUR 25TH ANNIVERSARY

This summer the Thornapple Area Enrichment Foundation (TAEF) celebrated its 25th year of serving the Thornapple Kellogg School District and its community. In 1992 TAEF was established with a \$32,000 gift from Fern Polan Trouyot, who wanted to support the Thornapple Kellogg School District. In the past 25 years TAEF has grown to almost 50 different funds with net assets of over \$1.9 million. TAEF would have never accomplished this without the dedication of its tireless volunteers and generous contributors.

In June of this year we celebrated our 25th Anniversary with the community that made it all possible by having a birthday party. We would like to thank the many supporters who came to the Middleville Pavilion to share in this community-wide celebration.



FUNDS

Adam Dipp Scholarship Fund
Adele & Arnold Parker Family Fund
Alecia Lorraine Holst Scholarship Fund
Beacon Society, Friends of the School
& Community Library Fund
Beth Helrigel Wester Memorial
Scholarship Fund
Calvin C. Plummer Memorial Fund
Charles & Margery Williams Youth
Activity Fund
Clay Hills Farm Fund
Donald & Catherine Williamson Visual
and Performing Arts Scholarship Fund
Dr. Wayne and Marie Finkbeiner
Scholarship Fund
Dykstra EMS Matching Fund
Eugene & Edna Hendrickson
Memorial Scholarship Fund
Fitzgerald Odyssey of the Mind and
Arts Fund
Francisca C. Vrona Memorial
Scholarship Fund
Frank Tichvon Memorial Fund
Gerald & Ceta Williams Fund
Gerald L. Page Education Scholarship
Fund
Jeffery Lehman Memorial Scholarship

Fund
Jessica Coe Memorial Fund
JK Simpson Scholarship Fund
John & Maxine Robertson Scholarship
Fund
Julie Bender Women's Athletic
Scholarship
Katherine & Edward Wieringa
Friendship & Community Scholarship
Fund
Lois Ann Nagel-Seppanen Scholarship
Fund
Lorraine Dahlgren Memorial
Scholarship
Lynn Helrigel Summers Memorial Fund
McCullough Family Scholarship Fund
Middleville Rec Center Fund
Middleville Women's Club Scholarship
Fund
Millicent Knox Teacher Scholarship
Fund
Mom's Scholarship in memory of
Virginia Hoover Harrison Root Fund
Ray Page Scholar-Athlete Memorial
Fund
Richard & Eric Lee Reyff Memorial
Fund

Rodney & Rena Schad Memorial
Scholarship for Industrial Arts Fund
Samuel McKeown Memorial
Scholarship Fund
Tad Thatcher Memorial Scholarship
Fund
TAEF KickStart to Career Fund
TAEF Matching - RKW Working Student
Scholarship Fund
Terrie Yoder Memorial Fund
Thomas R. Hamilton Memorial
Scholarship Fund
Thornapple Area Enrichment
Foundation Fund
Thornapple Kellogg Alumni
Association Fund
Thornapple Kellogg Public Library
Fund
Thornapple Kellogg Tradesman
Scholarship
TK Class of '57 Scholarship Fund
Travis Wenger Memorial Scholarship
Fund
Travis Wenger Memorial 4-H
Scholarship Fund
William McGee Memorial Scholarship
Fund

VOLUNTEERS

Anne Nolan
Audrey Renner
Beth Hannapel
Beth Smith
Brady Zellmer
Cathy Hart
Celeste Wolverton
Craig Stolsonburg
Cyndi Gerbasi
Deb Tomko

Diane Gaertner
Diane
Weatherhead
Debbie McKeown
Don Williamson
Ellen Sydolski
Erica Dudik
Gretchen Parsons
Heidi VanAman
Holli Dickman

Janis Fitzgerald
Jeff Wolverton
Jessica Phillips
Jim Keller
Jon Simpson
Karen Heath
Kelly Sporer
Kim Finkbeiner
Kristen Cove
Kyle McKeown

Lisa Brown
Lisa Finkbeiner
Lyndsey Carpenter
Mark Sevald
Matt Palmer
Mike Gaertner
Michael Gormley
Mike Bremer
Norma Jean Acker
Patricia Johns

Rebecca Hoskins
Robin Walters
Sandi Drummond
Shelley Erb
Stephanie Woods
Susan Foster
Tammy Borden
Tammy Burbridge
Tony Stein
Vonnie Verlinde