



# volunteer **VOICE**2015

*your hometown charitable organization*

P.O. Box 164, Middleville, MI 49333 | (269) 945-0526 | [taef@barrycf.org](mailto:taef@barrycf.org)  
a geographic affiliate of the Barry Community Foundation

# a letter to the **COMMUNITY**

It has been an exciting year for the Thornapple Area Enrichment Foundation. We are thrilled to be part of the new KickStart to Career program. Through generous donations, each and every Barry County kindergartner will have a postsecondary savings plan setup and funded with \$50.

We truly hope and believe this inspires families to start thinking about saving and results in more opportunities for our kids when they leave TK as graduates. Because we feel so strongly about the program TAEF has decided to participate in a matching program to further fund TK students' accounts throughout their TK experience.

Also, we continue to allocate more dollars toward granting. We feel these grants are touching numerous lives in the classroom and community and want to continue to grow this side of our philanthropic initiatives. If you find yourself drawn

to a community project or have ideas, please reach out to our organization so we can assist in brainstorming ways to help.

On behalf of the board, our committee members, supporters and TK community, I offer a sincere thank you. The Thornapple Area Enrichment

Foundation looks forward to your support in the year to come and in making an impact on our community forever.

Sincerely,

Kyle McKeown  
Board President



## 2014-2015 **BOARD OF TRUSTEES**



Not pictured: Justin Sydloski (YAC representative)

### Current Members:

Front Row (from left): Matt Palmer, Gary Thaler, Mike Bremer, Shelley Erb, Diane Weatherhead, Jeff Wolverton, Mark Sevald. Back Row (from left) TK Superintendent: Tom Enslen, Kyle McKeown, Lyndsey Carpenter, Craig Stolsonburg, Don Williamson, BCF/TAEF Liaison: Annie Halle

### Special Thank You:

We would like to extend our gratitude to Diane Weatherhead and Don Williamson who are the most recent past board members and have dedicated years of service to TAEF.



# Janis Fitzgerald **HOMETOWN HERO**

Janis Fitzgerald has poured countless volunteer hours into Thornapple Kellogg Schools starting the Battle of the Books contest, and serving as coordinator for the Odyssey of the Mind teams. Because of her dedication to the schools, she was honored by the Thornapple Area Enrichment Foundation as the 2015 Hometown Hero.

Janis was raised in East Grand Rapids and graduated from Forest Hills Northern High School. She received a degree in computer science and accounting from Davenport University. She worked at Old Kent Bank for 16 years and moved to Middleville in 2003 after landing a job at Hastings Mutual Insurance Company.

In December 2004, Fitzgerald was diagnosed with stage three breast cancer. Despite surgery, radiation and chemotherapy treatments, Janis continued to work and actively volunteer. Cancer spread to her bones and lungs and she entered a clinical trial in Detroit. The progression of cancer to her lungs forced her out of the trial and left a grim outlook. She has never given up and continues to battle the cancer she has faced for nearly 11 years. Janis however doesn't consider herself a "hero."

"She is an extremely visible community member and her selflessness is evident and has impacted both the Schools and the Middleville community. She sets a good example for the rest of us," said Mike Bremer, the evening's MC. "She has

volunteered countless hours at TK. She always puts others first."

"You are an absolute saint. On behalf of countless kids, countless committees, countless colleagues, how could I possibly thank you enough?" said Tom Enslen, Thornapple Kellogg Schools Superintendent.

Kelly Bearden spoke about how proud she is to have Fitzgerald as a lifelong friend. "She's a fighter. She never stops and she always puts herself last on the list. There are so many reasons you are my hero," said Bearden. "I feel grateful to call her my best friend - my hero."

And she's doing even more. Fitzgerald has established a fund to assist students wanting to participate in Odyssey of the Mind and other enrichment and art programs. The fund is set up through the Thornapple Area Enrichment Foundation. "I'm just an ordinary person living under extraordinary conditions living with cancer. The joy I've received from giving to others is much more than I give. It lets me focus not on myself but on others," she said.

Janis ended the night with a quote from ESPN Sports Center anchor Stuart Scott which she has taken to heart, "You beat cancer by how you live, why you live, and in the manner in which you live."

# community based GRANTING

This year TAEF is broadening its focus to include community granting that will support community based initiatives in Middleville. Although TAEF received its beginning in education, we understand that we need to support the entire community to ensure a healthy school district. Our TK community continues to grow and so does its needs. Recently TAEF was given \$15,000 by an anonymous donor to jump start our community granting efforts. Our goal is to double this amount and raise \$30,000.

We will give our first community grant this year to the Veteran's Memorial Fund of Middleville to help build a memorial for those who have served.

Community grants will allow us to support many types of projects over the next few years such as basic needs, environment, health, wellness and the economy. We are excited to be embarking on this new area of giving, and we hope you will join us in this important work.

## 2014-2015 GRANTS

### \$2,000 TO PAGE ELEMENTARY

Grant used to purchase a Fountas & Pinnell Leveled Literacy Intervention Library for 4th and 5th grade students with learning disabilities at Page Elementary. This library will provide extra support to students who need assistance with reading and writing.

### \$300 TO THORNAPPLE KELLOGG GREAT START READINESS PRESCHOOL

This grant made it possible for 32 low-income and at-risk students to participate in three field trips. Students were able to attend Cotant's Farm Market for its Fall Festival, the Grand Rapids Children's Museum, and a local zoo.

### \$825.79 TO LEE ELEMENTARY 2ND GRADE

Grant was used to purchase 30 sets of grade level science books to enhance the science program. This grant equipped students with science text that aligned with the district's curriculum goals.

### \$1,912.00 TO LEE ELEMENTARY 2ND GRADE

Towards the purchase of 60 Rekenrek for the math program. A Rekenrek is a Visual Model for Math Computation and Problem Solving, which combines features of the number line, counters and base-10 models. Through this teaching process students will learn numerous strategies to work with numbers and build conceptual understanding.

### \$962.21 TO THORNAPPLE KELLOGG COGNITIVE IMPAIRMENT PROGRAM

This grant helped to provide financial assistance for the students (k-12) in the TK Cognitive Impaired Program to participate in a 12 week therapeutic horseback riding program at YMCA Camp Manitou-Lin. The riding program helps students gain self-esteem, emotional worth, core strength, verbal skills, and so much as they learn to direct and care for a horse.



### \$500 TO THORNAPPLE KELLOGG ODYSSEY OF THE MIND

TAEF provided a grant to two TK-OM teams to help off-set the cost for them to participate in the Odyssey of the Mind World Finals at MSU. Odyssey of the Mind is a creative problem solving program which allows students to work through solutions to complex problems.

# supporting the TK School District **KICKSTART TO CAREER**

THORNAPPLE  
KELLOGG  
HIGH SCHOOL



TAEF is excited to be a part of this ground breaking program that will change the educational aspirations of the children of our community forever. We are fortunate to be an affiliate of Barry Community Foundation which helps us leverage our funding to provide a bigger impact for the students of the Thornapple Kellogg School District. We hope you will join us in helping to secure a brighter future for our students by investing in the Kickstart to Career Program.

## What is the KickStart to Career Program?

KickStart to Career is a new children's savings program brought to you by the Barry Community Foundation, Hastings City Bank and Barry County school districts. The program provides local kindergarten students with a Children's Savings Account to be used for their future college or career training expenses.

The first accounts will be opened in January of 2016 with a \$50 deposit for every kindergartner enrolled or registered at a school district in our county. This \$50 has been fully funded for the kindergartners of Barry County forever.

Each child will become the beneficiary of the funds once he/she accesses the account for post-high school education and/ or training. The accounts will also accept deposits from individuals and organizations like TAEF who are interested in contributing to the student's fund.

## What is TAEF's Role?

TAEF feels this is an amazing opportunity and is excited to be partner to provide additional incentives to TK students. We feel our students and district work very hard to attain academic goals and achievements. We are proud to help continue to support these efforts in a way that will assist all TK students with their postsecondary educational goals.

TAEF has designated a portion of its available funds to make \$5.00 contributions to TK students who have KickStart Savings Accounts through the foundation. In order to celebrate and encourage students to continue their education with TK, these deposits will be made at the end of 1st, 3rd, 5th, 7th and 9th grades. Our intention is to help our most vulnerable students see that college or career training is an option, all while instilling the importance of saving at a young age. TAEF has supported many educational efforts in the past including classroom granting and scholarships; however, we feel this is a way for us to TOUCH EVERY CHILD and to be a part of his or her entire educational journey at TK.



## Help Change the Future of our District

TEAF is committed to this program and the success of our students and school district and we encourage you to be a champion for the program as well. In order to fully fund this program for TK student forever, TAEF needs to raise \$150,000. If you are interested in being a part of this program, TAEF asks that you send contributions in the envelope provided to the Thornapple Kellogg KickStart to Career Program. TAEF would not be able to participate in this amazing opportunity without the help and support of our generous community.



# 2015 SCHOLARSHIP recipients

Congratulations to the 2015 Thornapple Area Enrichment Foundation scholarship recipients. We are committed to providing support for our Thornapple Kellogg High School graduates by helping them achieve their postsecondary aspirations. This year almost \$30,000 was paid in scholarships.

*The following scholarships were not awarded this year:*

**Jeffery Lehman**

**John and Maxine Robertson Family**

**Katherine and Edward**

**Wieringa Friendship in Community**

*The following recipient is not pictured:*

**Conor Leach received:  
Lois Ann Nagel Seppanen  
Memorial Scholarship**



**Alixandra Hall**  
Terri Yoder Memorial Scholarship



**Amber VanMeter**  
Ray Page Scholar-Athletic  
Memorial Scholarship



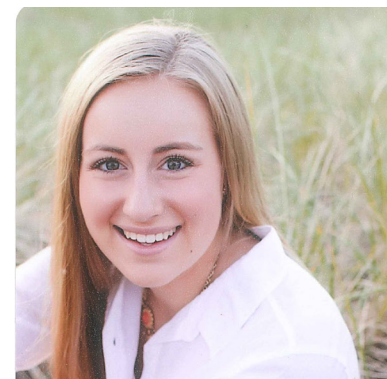
**Emily Adams**  
Millicent Grace Knox Teacher  
Scholarship



**Emily Chatterson**  
Rodney and Rena Schad  
Memorial Scholarship



**Madeline Lince**  
TK Class of 1957 Scholarship



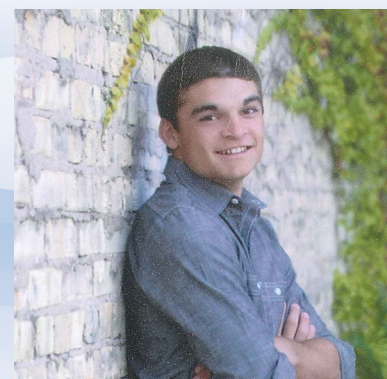
**Marlee Willshire**  
Beth Heligel Wester Memorial Scholarship  
Thomas Hamilton Tennis Memorial  
Scholarship



**Amy Goggins**  
Mom's Scholarship  
in Memory of Virginia Hoover  
Harrison Root



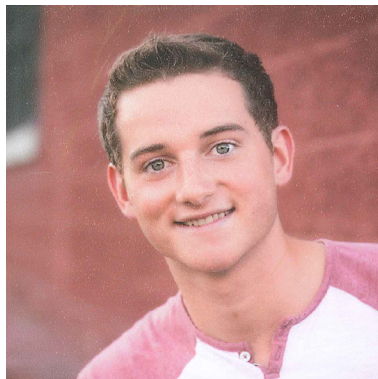
**Carley Dole**  
Francisca C. Vrona Memorial Scholarship  
Middleville Women's Club Scholarship  
Samuel McKeown Memorial Scholarship  
William McGee Memorial Scholarship



**Nicholas Iveson**  
TK Class of 1957 Scholarship



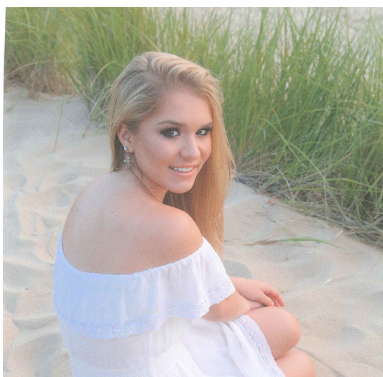
Andrew Brown  
Samuel McKeown Memorial  
Scholarship



Nathaniel Seeber  
TAEF Matching - RKW Working  
Student Scholarship



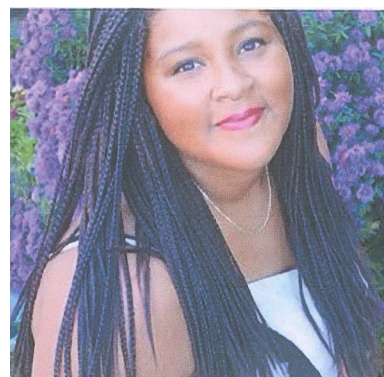
Elizabeth Parker  
McCullough Family - Delton  
Kellogg Scholarship



Erin Finholm  
Lynn Helrigel Summers Memorial  
Scholarship



Joseph Lambert  
Gerald L. Page Scholarship  
Jon and Kay Simpson Scholarship  
Samuel McKeown Memorial Scholarship



Kayla Gibbs  
Dr. Wayne and Marie Finkbeiner  
Scholarship



Mason Lettinga  
Alecia Lorraine Holst Memorial Scholarship  
Travis Wenger Memorial Scholarship



Megan Redman  
Eugene and Edena Hendrickson  
Scholarship



Merle Simmons III  
Adam Dipp Scholarship  
Adele & Arnold Parker Scholarship  
Travis Wenger 4-H Scholarship



Rachel Belson  
Samuel McKeown Memorial  
Scholarship  
Tad Thatcher Memorial Scholarship



Raquel Soyka  
TAEF Traditional Scholarship



Zachary Beardsley  
McCullough Family - Thornapple  
Kellogg Scholarship

# funds

Adam Dipp Scholarship Fund  
Adele & Arnold Parker Family Fund  
Alecia Lorraine Holst Scholarship Fund  
Beacon Society, Friends of the Thornapple Kellogg  
School & Community Library Fund  
Beth Helrigel Wester Memorial Scholarship Fund  
Calvin C. Plummer Memorial Fund  
Charles & Margery Williams Youth Activity Fund  
Clay Hills Farm Fund  
Donald & Catherine Williamson Visual and  
Performing Arts Scholarship Fund  
Dr. Wayne and Marie Finkbeiner Scholarship Fund  
Dykstra EMS Matching Fund  
Eugene & Edna Hendrickson Memorial Scholarship  
Fund  
Fitzgerald Odyssey of the Mind and Arts Fund  
Francisca C. Vrona Memorial Scholarship Fund  
Frank Tichvon Memorial Fund  
Gerald & Ceta Williams Fund  
Gerald L. Page Education Scholarship Fund  
Jeffery Lehman Memorial Scholarship Fund  
Jessica Coe Memorial Fund  
JK Simpson Scholarship Fund  
John & Maxine Robertson Scholarship Fund  
Katherine & Edward Wieringa Friendship &  
Community Scholarship Fund  
Lois Ann Nagel-Seppanen Scholarship Fund  
Lynn Helrigel Summers Memorial Fund  
McCullough Family Scholarship Fund - TK  
McCullough Family Scholarship Fund - Delton  
Middleville Women's Club Scholarship Fund  
Millicent Knox Teacher Scholarship Fund  
Mom's Scholarship in memory of Virginia Hoover  
Harrison Root Fund  
Ray Page Scholar-Athlete Memorial Fund  
Richard & Eric Lee Reyff Memorial Fund  
Rodney & Rena Schad Memorial Scholarship for  
Industrial Arts Fund  
Samuel McKeown Memorial Scholarship Fund  
Tad Thatcher Memorial Scholarship Fund  
TAEF Board Discretionary Fund  
TAEF General Fund  
TAEF KickStart to Career Fund  
TAEF Matching - RKW Working Student  
Scholarship Fund  
Terrie Yoder Memorial Fund  
Thomas R. Hamilton Memorial Scholarship Fund  
Thornapple Area Enrichment Foundation Fund  
Thornapple Kellogg Public Library Fund  
TK Class of '57 Scholarship Fund  
Travis Wenger Memorial Scholarship Fund  
Travis Wenger Memorial 4-H Scholarship Fund  
William McGee Memorial Scholarship Fund

# volunteers

Tammy Borden	Kyle McKeown
Mike Bremer	Sarah Middleton
Paul Brouwers	Lois Page
Lisa Brown	Matt Palmer
Francie Brummel	Patrick Parker
Tammy Burbridge	Gretchen Parsons
Lyndsey Carpenter	Jessica Phillips
Barb Case	Jeff Pratt
Kristen Cove	Jody Pratt
Rebecca DeHaan	Heather Pratt
Holli Dickman	Jeff Schad
Deb Dinkel	Mark Sevald
Joanne Dipp	Jon Simpson
Erica Dudik	Beth Smith
Shelley Erb	Craig Stolsonberg
Lisa Finkbeiner	Ellen Sydolski
Kim Finkbeiner	Gary Thaler
Lyndsey Fischer	Duane & Pat Thatcher
Susan Foster	Deb Tomko
Mike & Diane Gaertner	Heidi VanAman
Cyndi Gerbasi	Paul VanKempen
Michael Gormley	Diana VanRhee
Julie Guenther	Vonnie Verlinde
Richard and Ruth Hamilton	John Vrona
Beth Hannapel	Robin Walters
Anne Hannapel-Noland	Diane Weatherhead
Cathy Hart	Deb Weatherhead
Karen Heath	Phil & Becky Wenger
Judy Hendrickson	Steve & Susan Wiersma
Marcia & Ken Holst	Bob Williams
Patricia Johns	Don Williamson
Misty Knox	Jeff & Celeste Wolverton
Patty Knox	Shelly Wolverton
Brad Lamberg	Stephanie Woods
Mike & Karen McCullough	David Yoder
Kevin McGee	