

TAEF
VOLUNTEER
Voice

"Your
Hometown
Charitable
Organization"



A Geographic Affiliate of
the Barry Community Foundation

The Willshires



Dear Friends,

Less than a year ago, our 5th grade daughter's Odyssey of the Mind team qualified for the World competition in College Park, Maryland. We had less than six weeks to raise the thousands of dollars needed for registration and student lodging. The Thomapple Area Enrichment Foundation (TAEF)

awarded the team with a grant of \$1,000. The kids competed in Maryland, placed 8th in the world and most importantly, had the experience of a life time.

Because of this and so much more, we are honored to represent TAEF as the chairs for their annual year end 2008/2009 campaign. For many years, we have seen what an asset TAEF has been to the community of Middleville and the Thomapple-Kellogg School system. We have also seen firsthand the dedication and commitment of the volunteer board. They are passionate about helping the people of our community. We are asking you to please support this fine organization.

We both graduated from Thomapple-Kellogg Schools, went off to Michigan State University and then came back to Middleville to live and work. Brian is a counselor at TK Middle School. Stacey is a CPA at McKeown, Kraai and Phillips, PLC. We have two children in the TK school system. Ben is in 9th grade and Marlee is in 6th grade.

Board of Directors

Joanne Dipp * Marilyn Finkbeiner * Krissta Hannapel * Judy Hendrickson
* Ed Schelliger * Jon Simpson * Diane Weatherhead * Bob Williams *

A Letter from your Board President



Since 1992 the Thornapple Area Enrichment Foundation has proudly been "Your Hometown Charitable Organization". With our 12 volunteer board members we have accomplished a great deal since then. TAEF has provided hundreds of students with college and vocational scholarship money to attend post high school education. Just this past spring alone over \$62,000.00 was awarded to 30 students to further their education.

In June, the 5th grade Odyssey of the Mind World Team received a \$1,000.00 grant from TAEF to attend world competition in Maryland. This summer Ms. Maggie Alguire and Ms. Cindy Middlebush, two Thornapple-Kellogg, teachers, were each granted \$500.00 to attend Dominican University. This summer course, equipped the teachers with new techniques to improve their students reading skills.

TAEF has made a difference in many lives because of the community's financial support. This year has a new exciting twist to our annual year end appeal 2008. The Barry Community Foundation has an anonymous donor who will match 100% of any first time donor's gift to TAEF/BCF which is contributed to one or more of the endowed funds listed in this report. If you have given in the past and this does not apply to you, please consider asking family members, friends or acquaintances who have not given to TAEF through the Barry Community Foundation. Please share the enclosed blue envelopes. Additionally, if you are not currently a member of the BCF's 400 Club and give \$400.00 to one or more of the TAEF/BCF endowed funds it will be matched. All gifts to endowed funds qualify for the Michigan Tax Credit. (See chart).

I feel very privileged to serve this community through the efforts of TAEF.

Sincerely,

Fran Weatherhead

The Michigan Community Foundation Tax Credit for Michigan Residents

To encourage philanthropy for community foundations like TAEF, the State of Michigan created a tax credit for individuals giving up to \$200 and couples giving up to \$400. Your gift also qualifies for a federal tax deduction. The tables to the below give some examples of the combined tax savings based on the amount of your gift and your filing status.

YOUR \$200 INDIVIDUAL GIFT:

First time 400 Club Givers Foundation's Benefit	Your Gift Of:	- (Your Michigan 50% Tax Credit:	+ Federal Tax Rate:	=	Your Cost After Tax:
\$400	\$200	\$100	+ \$30 @ 15% Rate	=	\$70
\$400	\$200	\$100	+ \$50 @ 25% Rate	=	\$50
\$400	\$200	\$100	+ \$56 @ 28% Rate	=	\$44
\$400	\$200	\$100	+ \$66 @ 33% Rate	=	\$34
\$400	\$200	\$100	+ \$70 @ 35% Rate	=	\$30

YOUR \$400 GIFT MADE AS A COUPLE, FILING JOINTLY:

First time 400 Club Givers Foundation's Benefit	Your Gift Of:	- (Your Michigan 50% Tax Credit:	+ Federal Tax Rate:	=	Your Cost After Tax:
\$800	\$400	\$200	+ \$60 @ 15% Rate	=	\$140
\$800	\$400	\$200	+ \$100 @ 25% Rate	=	\$100
\$800	\$400	\$200	+ \$112 @ 28% Rate	=	\$88
\$800	\$400	\$200	+ \$132 @ 33% Rate	=	\$68
\$800	\$400	\$200	+ \$140 @ 35% Rate	=	\$60

* Cheryl Peters * Gary Ryder
Don Williamson * Jeff Wolverton

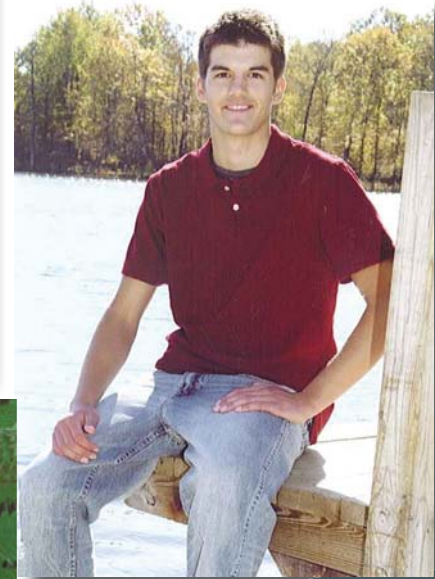
Brittany Benjamin



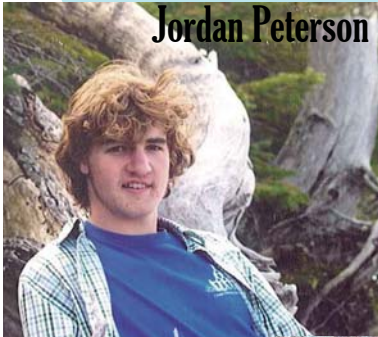
Whitley Bremer



Johnathon Delger



Jordan Peterson



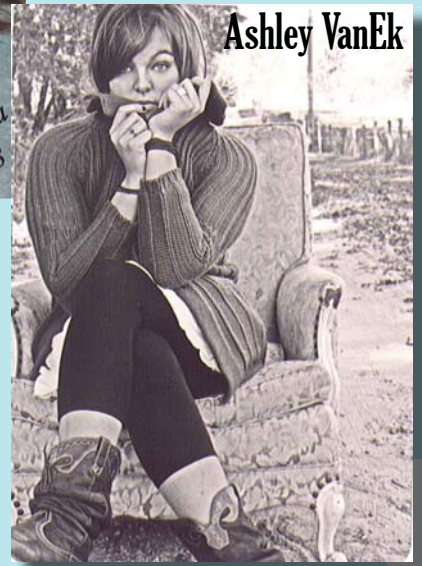
Luke Bremer



Kindra Burger



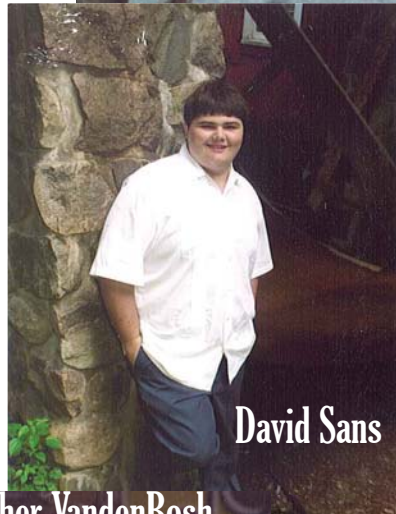
Ashley VanEk



Emily Reed



David Sans



Christopher VandenBosh



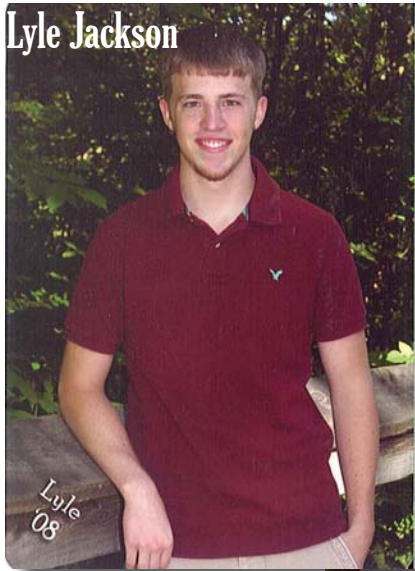
Ian Sission



Stephanie Wingeier



Thornapple Area Enrichment Foundation 2008 Scholarship Recipients



Adam Dipp Scholarship

Luke Bremer

Alicia Lorraine Holst Scholarship

Kindra Burger

Beth Helrigel Wester Memorial Scholarship

Ashley VanEk

David and Barbara Dykstra Family Matching EMS

Dana Drummond-Rittenberg (not pictured)

Dr. Wayne and Marie Finkbeiner Scholarship

Nathan Jazwinski

Jeffery Lehman Memorial Scholarship

Timothy Etter (not pictured)

Jon and Kay Simpson Scholarship

Stephanie Wingeier

Lois Ann Nagel Seppanen Memorial Scholarship

Hillary Klunder

Lynn Helrigel Summers Memorial Scholarship

Christopher VandenBosch

McCullough Family Scholarship

Danielle Johnson

Middleville Women's Club Scholarship

Lauren Tandy (not pictured)

Millicent Grace Knox Teacher Scholarship

Emily Reed

Mom's Scholarship in Memory of Virginia Hoover Harrison Root

Rowshawn Neil (not pictured)

Rodney and Rena Schad Memorial Scholarship for Technical Arts

Lyle Jackson

Samuel McKeown Memorial Scholarship

Brittney Benjamin

Whitley Bremer

Ian Sisson

Alesha Ward

TAEF Matching – RKW Working Student Scholarship

Kevin Heynig

Terri Yoder Memorial Scholarship

Johnathon Delger

Jordan Petersen

Thomas R. Hamilton Tennis Memorial Scholarship

Sydney Kilmartin (not pictured)

Thornapple Area Enrichment Foundation Traditional Scholarship

Cailly Howell (not pictured)

Keith Winchester

Kindra Burger

Travis Wenger Memorial 4-H Scholarship

Scott Wilson (not pictured)

Danielle Johnson (not pictured)

Travis Wenger Memorial Scholarship

David Sans

TAEF Special Needs

Kelli Schut (not pictured)

TAEF Funds

Jessica Coe Memorial Fund

Administered by TAEF, BCF and family members

Adam Dipp Scholarship Fund

For T-K senior scholars in the field of computer science

T-K Class of 1957 Scholarship Fund

David and Barbara Dykstra Family Matching EMS Fund

To financially assist the education of Thornapple Township Emergency Services personnel

Dr. Wayne and Marie Finkbeiner Scholarship Fund

For T-K senior scholars in the field of medical and allied health

Thomas R. Hamilton Memorial Scholarship Fund

For T-K senior scholars in the field technology, medicine or business

Aleda Holst Scholarship Fund

For T-K senior scholars in the field of medicine and allied health

Millicent Knox Teacher Scholarship Fund

For T-K senior scholars pursuing a career in education

Jeff Lehman Memorial Scholarship Fund

For T-K senior scholars who have participated on one or more high school athletic team

Mc Cullough Family Fund

For T-K senior scholars, graduates or home schooled students who live in the T-K School District majoring in the field of business, management or accounting

Samuel McKeown Memorial Scholarship Fund

For T-K senior scholars in the fields of business, management or accounting

Middleville Women's Club Scholarship Fund

For T-K senior scholars pursuing a two or four year college degree

Mom's Scholarship in Memory of Virginia Hoover

Harrison Root Fund

Awarded to a "Barry County Mom" who is the primary support for her family

Lois Ann Nagel-Seppanen Fund

For T-K senior scholars pursuing a major in business, management, or accounting

Calvin C. Plummer Memorial Fund

Provides grants for special-needs children

Eric Lee Reyff Memorial Fund

Supports summer activities of learning-disabled students for Barry Intermediate and Thornapple-Kellogg School Districts

RKW Working Student Fund

For part-time working students who are pursuing their college degree

Inspiring Achievements



Frank Tichvon
2008 Unsung Hero

Odyssey of the Mind 2008

Dear TAEF,
Thank you VERY much for your generous donation for our Odyssey of the Mind (O.M.) World Finals trip in MD. We had a great time in MD! We got 8th place in the world! (out of 62). Our amazing and rewarding trip would have been possible without your donation! So once again our team like to say a HUGE "Thank you!"

Sincerely,
Amy, Emily, Jade, Janie,
Marlee and Merle
(the #8 team in the world)



THANK YOU

New Funds

Thornapple-Kellogg Library Fund

The Thornapple Kellogg Library enriches the school and community by providing a rich variety of books, programs, and technology.



From children's story time and book discussion groups to the summer reading program, the library celebrates reading and lifelong learning for all ages.

Your continued financial support ensures a vibrant, growing community library: an expanded book collection and diverse programming capture the interest, imagination and curiosity of all readers. Invest in the future of your community by supporting your library.

Eugene and Edna Hendrickson Memorial Scholarship Fund

This scholarship was established by Annetta and Judy Hendrickson in memory of their parents to provide a one time award of \$500.00 for a graduating senior of the Thornapple-Kellogg School District.

The student must attend a state/public college. Only seniors in high school may apply.



Robertson Family Scholarship Fund

For T-K alumni pursuing a degree in higher education

Rena and Rodney Schad Industrial Arts Scholarship Fund

For T-K senior scholars in the fields of industrial arts, drafting, engineering or CAD/CAM

JK Simpson Scholarship Fund

For T-K senior scholars pursuing a nursing, allied health or business degree at Western Michigan University

Lynn Helrigel Summers Memorial Fund

For T-K senior scholars who are seeking a major or minor in art or music

TAEF General Fund

Used for foundation expenses, scholarships, grants and mini-grants

TAEF Discretionary Fund

For special board-approved grants and scholarships

TAEF Traditional Scholarship Fund

T-K senior or graduate scholars pursuing secondary education

Tad Thatcher Memorial Music Scholarship Fund

For a Barry County music student

Beth Helrigel Webster Memorial Fund

For T-K senior scholars who are seeking a major or minor in art or music

Travis Wenger 4-H Memorial Fund

Scholarship for Barry County 4-H participants

Travis Wenger Memorial Fund

For T-K senior scholars pursuing a career in landscape design

Charles and Margery Williams Youth Activity Fund

This fund makes grants to support youth activities in the Middleville area

Donald and Cathy Williamson Visual Performing Arts Scholarship Fund

For T-K senior scholars who are seeking a major in visual or performing arts.

Terrie Yoder Memorial Scholarship Fund

For T-K senior scholars who are seeking a degree in education and/or Christian ministry

Thornapple-Kellogg Library Fund

For the Thornapple Area Public Library

Eugene and Edna Hendrickson Memorial Scholarship Fund

For a graduating Thornapple-Kellogg High School senior

Marilyn Finkbeiner



I am honored to be a volunteer board member of the Thornapple Area Enrichment Foundation. It's been both a wonderful and learning experience these past 16 years. What a pleasure to experience and see the significant difference TAEF has made for the students of the TK School District and the Middleville Community.

Each time TAEF develops a new fund for either a new scholarship or community project I feel very fortunate and proud to live in such a giving community. A community, that by its generosity is creating long term benefits for the future of the hometown.

Seeing a growth of one fund to 32 is amazing to me. TAEF has grown so much over the years, it's beyond my dreams. All the volunteers on the board have worked many hours to allow the foundation to grow.

TAEF * PO Box 164 * Middleville, MI 49333 * Phone: (616) 706-5592 * Email: taef@barrycl.org

TAEF
PO Box 164
Middleville, MI 49333

THORNAPPLE AREA ENRICHMENT FOUNDATION