

TAEF

2014

VOLUNTEER

Voice



*"Your
Hometown
Charitable
Organization"*

On the Web at

www.thornapplefoundation.org

www.facebook.com/ThornappleAreaEnrichmentFoundation

A Geographic Affiliate of
the Barry Community Foundation

A Letter from your Board President

I would like to extend my sincere gratitude to all who support the Thornapple Area Enrichment Foundation (TAEF). It has been a successful year. TAEF awarded \$40,800 in 2014 in scholarship dollars to area students to help them achieve their post secondary educational goals. Each year, our organization strives to increase the number of students that receive scholarships and maximize the dollars awarded. I hope you join in our efforts, through additional financial support, so that we may exceed this amount in 2015!

We are responding to the needs of our school district by increasing our granting capacity. TAEF has implemented some exciting changes to our grant giving process that will take effect in the fall of 2015. This will include a more strategic approach to granting so that we are able to most effectively utilize the dollars available. As TAEF becomes more diversified and creates additional opportunities to impact the lives of our students and community, we want to ensure the process is conducive to those who approach us with needs.

As in past years, we hope you might consider becoming involved with one of our committees. We are always seeking engaged volunteers to make our organization a stronger one. Please do not hesitate to contact one of our board members if you are interested in becoming involved.

Again, on behalf of the board, our committee members and students of Thornapple Kellogg, we extend our gratitude to you, our Community for all of the support you provide that allows our organization to continue to make TK Schools and the Middleville Community a better place! We look forward to many future years of your partnership with the Thornapple Area Enrichment Foundation.

Sincerely,

Kyle McKeown



2013-2014 Board of Trustees

Current Members:

Front Row (from left) Mike Bremer, Shelley Erb, Matt Palmer

Back Row (from left) TK Superintendent: Tom Enslin, Kyle McKeown, Lyndsey Carpenter, Jeff Wolverton, Craig Stolsonburg, BCF/TAEF Liaison: Annie Halle

Not Pictured:

Mark Sevald, Gary Thaler, Diane Weatherhead, Don Williamson

Special Thank You:

We would like to extend our gratitude to the most recent past board members who dedicated years of service to TAEF:

Bob Williams and Judy Hendrickson

Clay Hills Farm Fund

In memory of a local farmer from the Middleville area who was a humble man who lived a very simple life. He loved the land and valued the ability to save everything, never knowing when he might be able to use it. After graduating from TK in 1945 and serving two years in the US Army, he worked for Thornapple Kellogg as the Transportation Supervisor for the School District for almost 40 years. He was a self-educated engineer, mechanic, mathematician, recycler, and farmer. Although he never married, he loved spending time with his niece and nephews and had an unspoken, profound impact on the next generation.



Prior to his death, several conversations revolved around making a contribution to the Thornapple Community, which had played such a significant part of his life. It was because of these conversations that the Clay Hills Farm Fund was developed.

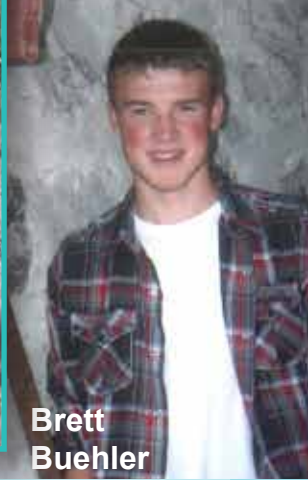
Through the Thornapple Area Enrichment Foundation this fund was established for the purpose of providing classroom and assistance grants to TK students who have a desire to attend post secondary training that will assist them in obtaining employment. Since this farmer was a natural mechanic and a skilled welder, students who pursue training in either mechanics or welding will be given preference for this grant award. Beginning in 2014-2015, this \$500 grant will be available annually. Applications and granting guidelines are available on the Thornapple Area Enrichment Foundation's website at: www.thornapplefoundation.org/grants

Thank you to all the volunteers who have generously donated their valuable time to the Thornapple Area Enrichment Foundation.

Elizabeth Adams	Marilyn Page
Mike Bremer	Matt Palmer
Paul Brouwers	Patrick Parker
Lisa Brown	Gretchen Parsons
Francie Brummel	Cheryl Peters
Tammy Burbridge	Laurie Pirrone
Lyndsey Carpenter	Jody Pratt
Kim Chausow	Heather Pratt
Rebecca DeHann	Jeff Schad
Holli Dickman	Mark Sevald
Deb Dinkel	Jon Simpson
Joanne Dipp	Beth Smith
Erica Dudik	Craig Stolsonburg
Marjorie Erb	Ellen Sydolski
Shelley Erb	Gary & Sue Thaler
Geanie Wieringa	Dwain & Pat Thatcher
Janis Fitzgerald	Sue Timm
Susan Foster	Heidi VanAman
Ann Hannapel-Nolan	Diana VanRhee
Beth Hannapel	Vonnie Verlinde
Judy Harrison	John Vrona
Judy Hendrickson	Robin Walters
Marcia & Ken Holst	Diane Weatherhead
Rebecca Hoskins	Deb Weatherhead
Deb Jensen	Becky & Phil Wenger
Patricia Johns	Steve Wiersum
Jim Keller	Steve Williams
Misty Knox	Don Williamson
Patty Knox	Jeff & Celeste Wolverton
Brad Lambert	Shelly Wolverton
Kevin McGee	Stephanie Woods
Gary & Char McKee	David Yoder
Kyle McKeown	
Sarah Middleton	



**Bethany
Budd**



**Brett
Buehler**



**Bryn
Beyer**



**Kortney
Richardson**



**Marissa
Swanson**



**Erin
Scheidel**



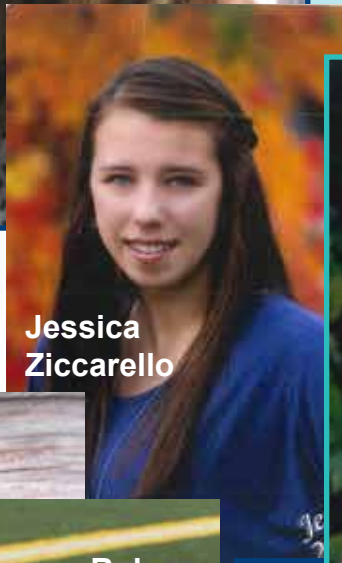
**Fiona
Shea**



**Haley
Carpenter**



**Laura
Walker**



**Jessica
Zicarelo**



**Yvonne
Ogradzinski**



**Sierra
Elkins**



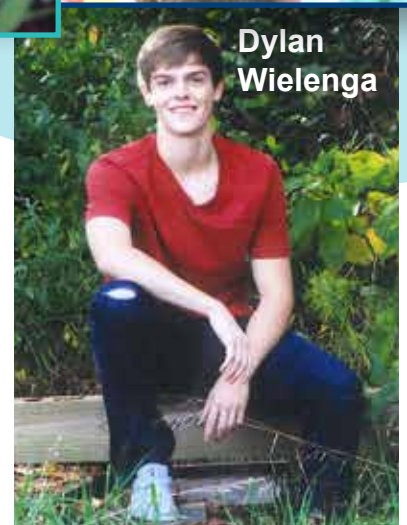
**Makayla
Agostini**



**Ruben
French**



**Marisa
Ostowski**



**Dylan
Wielenga**



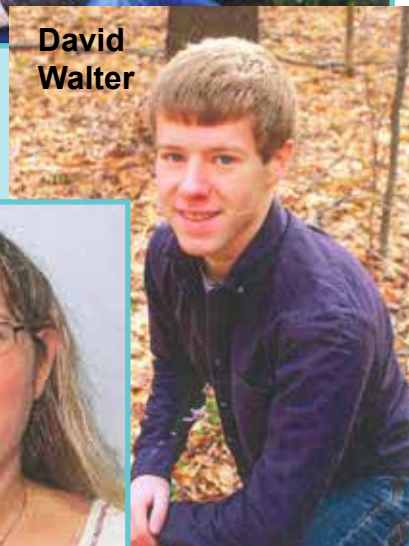
**Zachary
Comeau**



**Hannah
Bashore**



**Steven
Kopf**



**David
Walter**



**Tracy
Michaud**

- Adele and Arnold Parker Family Scholarship**
Zachary Comeau
- Alecia Lorraine Holst Memorial Scholarship**
Kortney Richardson
- Beth Helrigel Wester Memorial Scholarship**
Fiona Shea
- Dr. Wayne and Marie Finkbeiner Scholarship**
David Walter III
- Eugene and Edna Hendrickson Memorial Scholarship**
Dylan Wielenga
- Francisca C. Vrona Memorial Scholarship**
Jessica Ziccarello
- Gerald L. Page Education Scholarship Fund**
Marisa Ostrowski
- John and Maxine Robertson Family Scholarship**
Makayla Agostini
- Jon and Kay Simpson Scholarship**
Steven Kopf
- Katherine and Edward Wieringa Friendship
in Community Scholarship**
Kortney Richardson
Yvonne Ogrodzinski
- Lois Ann Nagel Seppanen Memorial Scholarship**
Laura Walker
- Lynn Helrigel Summers Memorial Scholarship**
Haley Carpenter
- McCullough Family Scholarship- TK**
Erin Scheidel
- McCullough Family Scholarship- Delton**
Sierra Elkins
- Millicent Grace Knox Teacher Scholarship**
Erin Scheidel
- Mom's Scholarship in Memory of
Virginia Hoover Harrison Root**
Tracy Michaud
- Ray Page Scholar-Athlete Memorial Scholarship**
Bryn Beyer
- Rodney and Rena Schad Memorial Scholarship
for Industrial Arts**
Hannah Bashore
- Samuel McKeown Memorial Scholarship**
David Walter III
Jessica Ziccarello
Ruben French
- Tad Thatcher Memorial Scholarship**
Marissa Swanson
- TK Class of '57 Scholarship**
Bryn Beyer
- TAEF Matching – RKW Working Student Scholarship**
Bethany Budd
- Terrie Yoder Memorial Scholarship**
Makayla Agostini
- Thomas R. Hamilton Tennis Memorial Scholarship**
Hannah Bashore
- TAEF Traditional Scholarship**
Ruben French
Marisa Ostrowski
- Travis Wenger Memorial 4-H Scholarship**
Kortney Richardson
- Travis Wenger Memorial Scholarship**
Brett Buehler
- William McGee Memorial Scholarship**
Steven Kopf

Thornapple Area Enrichment Foundation 2014 Scholarship Recipients

Hometown Hero



Don Boysen named 2014 “Hometown Hero”

Donald Earl Boysen grew up in the rural community of Hooper, Michigan where he learned to appreciate his small town, its people and the value of agriculture and business. Here he developed a passion for writing and wrote newspaper stories that reflected the lives of people who lived in his hometown. It was this passion and these life lessons that he brought with him to Middleville.

Don and his wife Joanne moved to Middleville in 1956 when he had the opportunity to purchase the Sun and News. In this position Don covered school events. As the Thornapple Township Supervisor he worked with the School Boards and Superintendents as the district continued to grow.

Don has infused this community with his positive attitude and unwavering work ethic. He has supported, and continues to support our community with his passion for people and charitable works!

The TAEF Board of Directors would like to extend its appreciation to all of the Fund Holders, whose dedication and generosity is the driving force behind this foundation.

Adam Dipp Scholarship Fund
Adele & Arnold Parker Family Fund
Alecia Lorraine Holst Scholarship Fund
Beacon Society, Friends of the Thornapple Kellogg School & Community Library Fund
Beth Helrigel Wester Memorial Scholarship Fund
Calvin C. Plummer Memorial Fund
Charles & Margery Williams Youth Activity Fund
Clay Hills Farm Fund
Donald & Catherine Williamson Visual and Performing Arts Scholarship Fund
Dr. Wayne and Marie Finkbeiner Scholarship Fund
Dykstra EMS Matching Fund
Eugene & Edna Hendrickson Memorial Scholarship Fund
Frank Tichvon Memorial Fund
Gerald & Ceta Williams Fund
Gerald L. Page Education Scholarship Fund
Jeffery Lehman Memorial Scholarship Fund
Jessica Coe Memorial Fund
JK Simpson Scholarship Fund
John & Maxine Robertson Scholarship Fund
Katherine & Edward Wieringa Friendship & Community Scholarship Fund
Lois Ann Nagel-Seppanen Scholarship Fund
Lynn Helrigel Summers Memorial Fund
McCullough Family Scholarship Fund - TK
McCullough Family Scholarship Fund - Delton Memorial Park Bench Fund
Middleville Women's Club Scholarship Fund
Millicent Knox Teacher Scholarship Fund
Mom's Scholarship in memory of Virginia Hoover Harrison Root Fund
Ray Page Scholar-Athlete Memorial Fund
Richard & Eric Lee Reyff Memorial Fund
Rodney & Rena Schad Memorial Scholarship for Industrial Arts Fund
Samuel McKeown Memorial Scholarship Fund
Tad Thatcher Memorial Scholarship Fund
TAEF Board Discretionary Fund
TAEF General Fund
TAEF Matching - RKW Working Student Scholarship Fund
Terrie Yoder Memorial Fund
The Francisca C. Vrona Memorial Scholarship Fund
Thomas R. Hamilton Memorial Scholarship Fund
Thornapple Area Enrichment Foundation Fund
Thornapple Kellogg Public Library Fund
TK Class of '57 Scholarship Fund
Travis Wenger Memorial Scholarship Fund
Travis Wenger Memorial 4-H Scholarship Fund
William McGee Memorial Scholarship Fund

TAEF List of Funds

Grant and Mini-Grant Awards

Education Technology Grants

As our world becomes technology driven, it becomes more and more important for our schools to remain relevant in this area. For this reason, the Thornapple Area Enrichment Foundation (TAEF) has dedicated much of the granting dollars this year to technology needs.



\$500 - Lee Elementary

Towards the purchase of iPads, I-Pad Cases and apps for the classroom. Students will use I-Pads to integrate technology, and service learning.

\$1,300 - Lee Elementary

Used to purchase Chromebooks for the second grade classrooms which will allow teachers to deliver instruction while continuing to engage students at a higher level.

\$1,156.86 - Page Elementary

This grant was used to purchase I-Pads for the classroom. I-Pads will allow the teacher to become a teaching facilitator and will encourage students to collaborate and problem solve with each other.

Curriculum Supporting Grants

\$185.90 - McFall Elementary

This grant was used to purchase a pilot program of the Lucy Calkins writing curriculum for 1st grade. This curriculum is designed to assist teachers at McFall in teaching complex narrative, informational and opinion writings to young writers.

\$50 - Thornapple Kellogg High School

This grant was used to purchase incentives for the Math Help Intervention Program. The program targets students who need additional assistance with math.

Arts Enrichment Grants

\$1,799.97- Thornapple Kellogg High School Auditorium

This grant helped purchase three microphones for the TK Auditorium. The TKHS Auditorium and its equipment are used in high school, middle school and elementary school productions.



Grants Fostering Leadership Opportunities

\$201.95 - Thornapple Kellogg High School

This grant was given to fully fund the TKHS Cognitively Impaired Class service-learning project. Students created items which were sold at an art fair and the proceeds were donated to the Spirit Farms Therapeutic Horseback Riding Program.

\$100 - Thornapple Kellogg Middle School

These dollars were used to support the Kids Helping Kids service learning project designed to teach 7th grade students about malnutrition and starvation in US History as well as today.

\$300 - Youth Quest Scholarships

A program designed to help area students learn leadership skills. The scholarships provided opportunity for 2 Thornapple Kellogg students to participate in the two day program.

Total Dollars Granted: \$5,594.68

Welcome New Board Members

Craig Stolsonburg

TAEF Board Secretary and Grant Committee Member

I am happy to be extending my volunteer and community involvement activities to the Thornapple Enrichment Foundation (TAEF). I have been in the Thornapple Area for most of my life, having graduated from Thornapple Kellogg High School in 1992. I am currently an Associate Broker with Bellabay Realty in Middleville and Caledonia.

Community service has always been an important aspect of who I am. I joined the Middleville Rotary

Club in August 2005 and currently serve on its board of directors. In 2008 I was elected to the Barry County Board of Commissioners, representing Yankee Springs and Orangeville. Last fall, I was re-elected serving my new district of Yankee Springs



Township, Thornapple Townships, and the Village of Middleville. In addition to these activities, I have been involved with Barry County United Way, Red Cross, Commission on Aging, Hastings Jaycees, Barry Economic Alliance, and many others.

I share my love and dedication to the Thornapple Area with my wife, Bridget of 13 years and our two children, Conroy and Laura both of whom attend Thornapple Kellogg Schools.

I look forward to the opportunity to continue to serve our community through TAEF.

Matt Palmer

Fund Development Committee Member

I am a proud graduate of Thornapple Kellogg Schools' Class of 2005. After high school, I pursued my post-secondary education at Northwood University. In 2009, I earned a Bachelor's Degree in Business Administration with a concentration in Accounting. I also minored in Banking and Finance, as well as Language Arts.

After working in Lansing at a public accounting firm for several years, in June of 2013, I accepted a position at Bradford White Corporation, where I currently serve as the General Accountant. The move to Bradford White opened many professional opportunities but also allowed me to return to Middleville, the town I have always called home.

Volunteering my time has always been a priority. While at college, I participated in the Northwood Honorary Accounting Society, as well as the Collegiate Business Professionals of America. In both organizations, I frequently participated in community projects that allowed me to offer my time for a greater purpose. Being from Middleville and having graduated from the Thornapple Kellogg School District, it has been a long term desire of mine to have a chance to give back to the

community, which has given me so much to be proud of. I am excited to join the Thornapple Area Enrichment Foundation (TAEF) Board. I see this opportunity as a way to offer both my personal time and professional skills to a tremendous organization that I have been familiar with since



I attended TK High School. TAEF has impacted countless individuals and I could not think of a better organization for which I'd like to be a part. I look forward to a lifelong pursuit of giving back to the Thornapple Area, which I credit for making me the person I am today.