

TAEF  
VOLUNTEER  
Voice

*"Your  
Hometown  
Charitable  
Organization"*



A Geographic Affiliate of  
the Barry Community Foundation

# The Schads

2009 TAEF Honorees



In the summer of 1992, the Thornapple Area Enrichment Foundation (TAEF) was formed. It was financially started with a \$32,000.00 bequeath from Fern Poland Trouyout, a former Middleville resident and a second cousin to Marilyn Finkbeiner. I was privileged to serve as its President with current board members Diane Weatherhead and Marilyn Finkbeiner, who have served on the board since inception.

Christine and I started the process of establishing a Mom's Scholarship Fund in honor of her mother Virginia Hoover Harrison Root. Other family members also contribute financially to this fund. This scholarship is for Moms who contribute over 50% of their family financial support and is renewable up to 6 years. It has made it easier for Moms to further their education and help take care of their families while attending school.

TAEF is an affiliate of the Barry Community Foundation and has assets of over a million dollars. To date TAEF has granted over \$250,000.000, in scholarships and has also contributed to local community projects. If you are not already a member and a contributor, we invite you to be a part of the Thornapple Area Enrichment Foundation, *Your Hometown Charitable Organization*.

Rex and Christine Schad



Not pictured: Bob Williams, Jon Simpson

## Board of Directors

- \* Joanne Dipp \* Marilyn Finkbeiner \* Krissta Hannapel \* Judy Hendrickson
- \* Ed Schellinger \* Jon Simpson \* Diane Weatherhead \* Bob Williams \*

# A Letter from your Board President



In 2009, TAEF has experienced a wonderful year with the Thornapple-Kellogg community. I would like to extend my gratitude to the community volunteers and financial supporters of TAEF. I am continually proud and thankful for each Board Member, both past and present, whose dedication has been unwavering. It has been a good year for TAEF to give and receive.

The Thornapple-Kellogg community has a unique situation in which our library is shared with the T-K School System. Last year a fund was established with TAEF for the public/community side of the Thornapple-Kellogg Library. This fund is specifically for public purposes (which are charitable, scientific, literary or educational in nature) including, but not limited to public library development and public library programming. Our library serves all ages from the young to the elderly and we are all investing in the community library's future through your support.

Barry Community Foundation has an opportunity for matching dollars from an anonymous donor available through December 31, 2009. Any first time donor to BCF/ TAEF who contributes to one or more of the enclosed list of endowed funds will receive a 100% match on their gift. Please share this wonderful giving opportunity with friends and family who may not be currently affiliated with TAEF/BCF. This is a definite incentive to generate new donors for the Foundation, incite growth for existing funds or establish new funds. Plus, if you are not a member of the BCF's 400 Club and give \$400.00 to one of TAEF/ BCF endowed funds, it will be matched and you will also qualify for the Michigan Tax credit (See tax chart).

It is truly a privilege to serve on this Foundation's Board, whose efforts impact the Thornapple-Kellogg community.

Sincerely,

*Deane Weatherhead*

## The Michigan Community Foundation Tax Credit for Michigan Residents

To encourage philanthropy for community foundations like TAEF, the State of Michigan created a tax credit for individuals giving up to \$200 and couples giving up to \$400. Your gift also qualifies for a federal tax deduction. The tables below give some examples of the combined tax savings based on the amount of your gift and your filing status.

**YOUR \$200 INDIVIDUAL GIFT:**

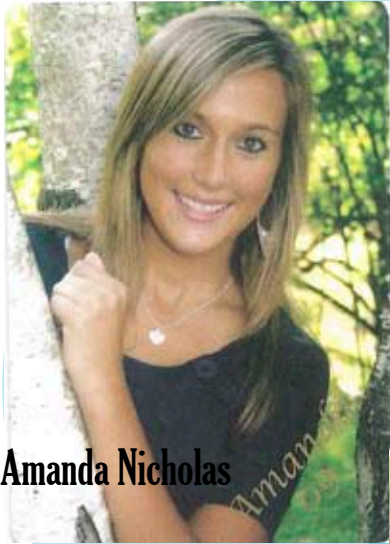
First time 400 Club Givers Foundation's Benefit	Your Gift Of:	- (Your Michigan 50% Tax Credit:	+ Federal Tax Rate:	=	Your Cost After Tax:
\$400	\$200	\$100	+ \$30 @ 15% Rate	=	\$70
\$400	\$200	\$100	+ \$50 @ 25% Rate	=	\$50
\$400	\$200	\$100	+ \$56 @ 28% Rate	=	\$44
\$400	\$200	\$100	+ \$66 @ 33% Rate	=	\$34
\$400	\$200	\$100	+ \$70 @ 35% Rate	=	\$30

**YOUR \$400 GIFT MADE AS A COUPLE, FILING JOINTLY:**

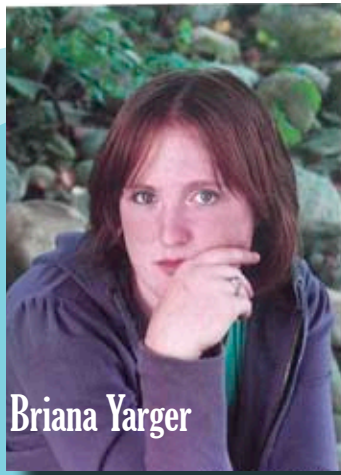
First time 400 Club Givers Foundation's Benefit	Your Gift Of:	- (Your Michigan 50% Tax Credit:	+ Federal Tax Rate:	=	Your Cost After Tax:
\$800	\$400	\$200	+ \$60 @ 15% Rate	=	\$140
\$800	\$400	\$200	+ \$100 @ 25% Rate	=	\$100
\$800	\$400	\$200	+ \$112 @ 28% Rate	=	\$88
\$800	\$400	\$200	+ \$132 @ 33% Rate	=	\$68
\$800	\$400	\$200	+ \$140 @ 35% Rate	=	\$60

\* Kyle McKeown \* Gary Rider

Don Williamson \* Jeff Wolverton \* BCF Staff Representative: Erin Welker



Amanda Nicholas



Briana Yarger



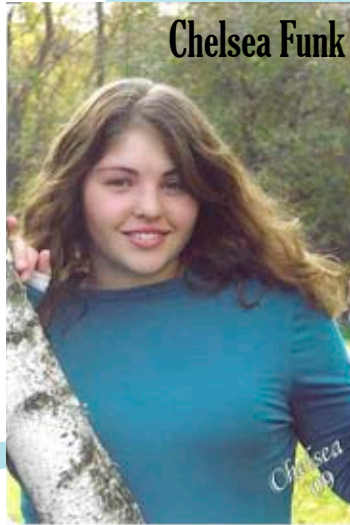
Griffin Endres



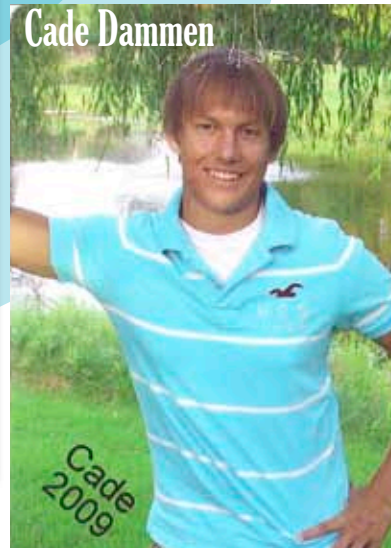
Alecia Strum



Melanie Truer

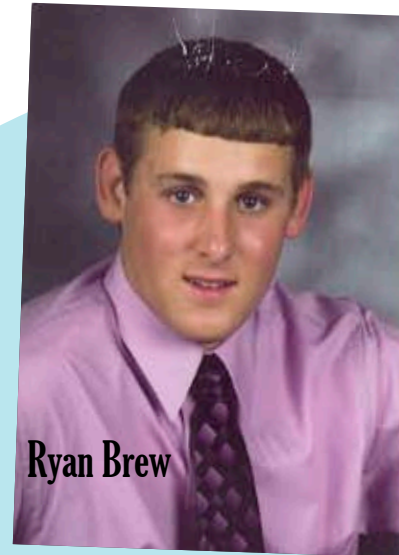


Chelsea Funk



Cade Dammen

Cade 2009



Ryan Brew



Beth Fuller

To the donor(s) of the Thornapple Area Enrichment Foundation Traditional Scholarship:

I am writing to express my sincere gratitude for selecting me to receive the Thornapple Area Enrichment Foundation Traditional Scholarship. This scholarship has been such a blessing for my family and I. it has helped lift some financial burden off of our shoulders. Now I will be able to focus on the most important aspect of college; learning.

Through your generosity I will be able to pursue a nursing degree at GVSU's Kirkhof College of Nursing. I will also be in the honors college program and will be staying in the honors college dorms my freshman year.

once again thank you for your generosity.

Sincerely,

Beth Fuller

Beth Fuller

berger

Mackinze  
Meyering



Kathleen Scheidel



Jamie Goggins



Lauren  
Lauren Matthews



Sarah Pappas



# Thornapple Area Enrichment Foundation 2009 Scholarship Recipients

## Alecia Lorraine Holst Scholarship

Beth Fuller

## Beth Helrigel Wester Memorial Scholarship

Amanda Nicholas

## David and Barbara Dykstra Family Matching EMS

Briana Yarger

## Dr. Wayne and Marie Finkbeiner Scholarship

Alecia Strumberger

## Eugene and Edna Hendrickson Memorial Scholarship

Eric Buchanan

## Jeffery Lehman Memorial Scholarship

David Comeau (not pictured)

## Jon and Kay Simpson Scholarship

Kathleen Scheidel

## Lois Ann Nagel Seppanen Memorial Scholarship

Mackenzie Meyering

## Lynn Helrigel Summers Memorial Scholarship

Chelsea Funk

## McCullough Family Scholarship

Melanie Truer

## Millicent Grace Knox Teacher Scholarship

Alyssa Bowerman (not pictured)

## Rodney and Rena Schad Memorial Scholarship for Technical Arts

Cade Dammen

## Samuel McKeown Memorial Scholarship

Ryan Brew

Jamie Goggins

Lauren Matthews

Mackenzie Meyering

## TAEF Matching – RKW Working Student Scholarship

Ryan Brew

## Thomas R. Hamilton Tennis Memorial Scholarship

Cade Dammen

## Thornapple Area Enrichment Foundation Traditional Scholarship

Beth Fuller

Mackenzie Meyering

Sarah Pappas

## Travis Wenger Memorial 4-H Scholarship

Griffin Endres

## Travis Wenger Memorial Scholarship

Nick Reigler (not pictured)

## TAEF Funds

### Jessica Coe Memorial Fund

Administered by TAEF, BCF and family members

### Adam Dipp Scholarship Fund

For T-K senior scholars in the field of computer science

### T-K Class of 1957 Scholarship Fund

For T-K scholars pursuing a degree in higher education

### David and Barbara Dykstra Family Matching EMS Fund

To financially assist the education of Thornapple Township Emergency Services personnel

### Dr. Wayne and Marie Finkbeiner Scholarship Fund

For T-K senior scholars in the field of medical and allied health

### Thomas R. Hamilton Memorial Scholarship Fund

For T-K senior scholars in the field technology, medicine or business

### Aleicia Holst Scholarship Fund

For T-K senior scholars in the field of medicine and allied health

### Millicent Knox Teacher Scholarship Fund

For T-K senior scholars pursuing a career in education

### Jeff Lehman Memorial Scholarship Fund

For T-K senior scholars who have participated on one or more high school athletic team

### McCullough Family Fund

For T-K senior scholars, graduates or home schooled students who live in the T-K School District majoring in the field of business, management or accounting

### Samuel McKeown Memorial Scholarship Fund

For T-K senior scholars in the fields of business, management or accounting

### Middleville Women's Club Scholarship Fund

For T-K senior scholars pursuing a two or four year college degree

### Mom's Scholarship in Memory of Virginia Hoover Harrison Root Fund

Awarded to a "Barry County Mom" who is the primary support for her family

### Lois Ann Nagel-Seppanen Fund

For T-K senior scholars pursuing a major in business, management, or accounting

### Calvin C. Plummer Memorial Fund

Provides grants for special-needs children

### Eric Lee Reyff Memorial Fund

Supports summer activities of learning-disabled students for Barry Intermediate and Thornapple-Kellogg School Districts

### RKW Working Student Fund

For part-time working students who are pursuing their college degree

# Inspiring Achievements

● A \$500 grant from the Charles and Margery Williams Youth Activity Fund and a \$500 grant from the TAEF Fund allowed TK students to participate in the after school enrichment programs which offered a wide range of lessons from Spanish to cooking.

● With a \$2000.00 grant from the TAEF Fund, the Foundation assisted the Extreme Community Needs Fund administered by the Barry County United Way to meet emergent needs of individuals or families in the Thornapple-Kellogg School District which were not addressed by other sources.

● The Lucy Calkins Writing program is proven to improve a teacher's effectiveness in administering writing instructions to their students. This program was made possible for Lee Elementary teachers with a \$500.00 grant from the Thornapple Area Enrichment Foundation's Fund.

● A \$500.00 grant from the Calvin C. Plummer Memorial Fund allowed implementation of the Brain Gym program at McFall Elementary. Brain Gym is a physical education program which permits students to participate in movement activities and is designed to enhance whole brain learning.

● Physical activity is an important part of an



elementary student's learning process. A \$2,500.00 grant from the TAEF Fund updated and improved the playground equipment for the 2nd and 3rd graders who attend Lee Elementary, giving students more

opportunities to participate when the recess bell rings. TAEF will also issue a \$2,500.00 challenge grant during the upcoming school year to assist in furthering this project

# New Funds

## Frank Tichvon Fund

This fund was established in memory of Frank Tichvon, a local business man. Frank was a simple, easy-going gentleman who's life's work involved carpentry and farming. Following World War II, after returning home, he followed his newly formed vision. Only after perseverance and a lot of hard work did his vision become a reality. He developed his farmland into a 27-hole creation known as Yankee Springs Golf Course.



This field of interest fund will consider assistance to students pursuing agriculture, golf/sports and woodworking development.

## Robertson Family Scholarship Fund

This scholarship was established by John and Maxine Robertson to provide a one-time award of \$500.00 for a graduating senior, graduate or an accredited home school student of the Thornapple-Kellogg School District. The student must be accepted into a trade school or accredited college working towards an associate degree with a 2.00 GPA or higher.



## Robertson Family Scholarship Fund

For T-K alumni pursuing a degree in higher education

## Rena and Rodney Schad Industrial Arts Scholarship Fund

For T-K senior scholars in the fields of industrial arts, drafting, engineering or CAD/CAM

## JK Simpson Scholarship Fund

For T-K senior scholars pursuing a nursing, allied health or business degree at Western Michigan University

## Lynn Helrigel Summers Memorial Fund

For T-K senior scholars who are seeking a major or minor in art or music

## TAEF General Fund

Used for foundation expenses, scholarships, grants and mini-grants

## TAEF Discretionary Fund

For special board-approved grants and scholarships

## TAEF Traditional Scholarship Fund

T-K senior or graduate scholars pursuing secondary education

## Tad Thatcher Memorial Music Scholarship Fund

For a Barry County music student

## Beth Helrigel Webster Memorial Fund

For T-K senior scholars who are seeking a major or minor in art or music

## Travis Wenger 4-H Memorial Fund

Scholarship for Barry County 4-H participants

## Travis Wenger Memorial Fund

For T-K senior scholars pursuing a career in landscape design

## Charles and Margery Williams Youth Activity Fund

This fund makes grants to support youth activities in the Middleville area

## Donald and Cathy Williamson Visual Performing Arts Scholarship Fund

For T-K senior scholars who are seeking a major in visual or performing arts.

## Terrie Yoder Memorial Scholarship Fund

For T-K senior scholars who are seeking a degree in education and/or Christian ministry

## Thornapple-Kellogg School and Community Library Fund

For the Thornapple Area Public Library

## Eugene and Edna Hendrickson Memorial Scholarship Fund

For a graduating Thornapple-Kellogg High School senior

## Frank Tichvon Fund

For students pursuing agriculture, golf/sports and woodworking development



During my 31 years with AT&T I had little time to serve my community through volunteer work. Upon retirement six years ago, I was eager to give back to the community and educational system that my children, grandchildren and wife were a part of. I have been honored to serve as a volunteer Thornapple Area Enrichment Foundation (TAEF) board member and treasurer for the last 6 years.

It is gratifying to see how far TAEF has progressed and grown. Each year there are new funds established and additional grant and scholarship dollars awarded to our Hometown TK School district students and community members.

My wife, Celeste, a retired educator, has found it rewarding to facilitate the “Circle of Giving” program which teaches philanthropy to TK 5th graders .

We are proud to be involved with the foundation and hope our small efforts will strengthen the legacy of giving in our community.

Jeff Wolverton

TAEF \* PO Box 164 \* Middleville, MI 49333 \* Phone: (269)795-3489 \* Email: [taef@barrycl.org](mailto:taef@barrycl.org)

TAEF  
PO Box 164  
Middleville, MI 49333

THORNAPPLE AREA ENRICHMENT FOUNDATION